

Oil Spill Recovery System



THE FOLLOWING IS A SUMMARY OF A SUCCESSFUL DEMONSTRATION OF DISBURSING AND COLLECTING OIL ABSORBENT FABRIC PRODUCED BY MONTEREY MILLS INC. USING SURFACE WATER MANAGEMENT EQUIPMENT PRODUCED BY AQUARIUS SYSTEMS.



Multi-Purpose Transport Barge

The Transport Barge can serve two purposes:

- Dispatching clean Monterey Oil Absorbent Fabric
- Returning soiled Fabric to shore for processing



Dispatching Clean Fabric into the Water

Here we see the transport begins to automatically convey the Fabric into the water



Dispatching Clean Fabric into the Water

Conveyor speed can be adjusted for optimal production



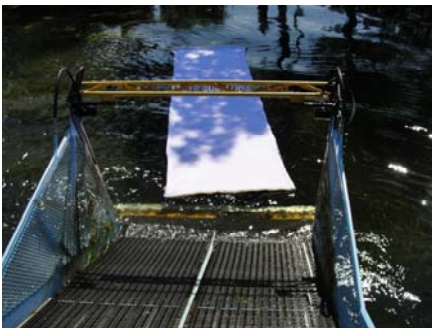
Fabric is Dispatched and Goes to Work

Fabric can now begin to absorb oil. Other methods of dispatching Fabric can be used on the Transport too; for example, unwinding it from rolls mounted on spools on the machine



Harvester Skims and Collects Flotsam and Jetsam

Here we see the Harvester approaching the Monterey Oil Absorbent Fabric as it prepares to capture it



View from the Operator's Seat on Harvester

The Collection Head depth is adjustable from above the waterline to five feet deep below the water surface to capture floating and suspended objects



Harvester Conveys the Fabric Onboard the Machine

This photo sequence shows how effortlessly the Collection Head captures and conveys the Monterey Oil Absorbent Fabric onboard the machine.

Soiled fabric can be dropped loosely directly onto the Harvester storage conveyor where it immediately begins decanting water while retaining the oil. Once the Harvester storage conveyor is full, the material is conveyed into the Transport Barge to haul elsewhere for processing or disposal.



An alternative handling method is to spool the fabric into rolls onto a spindle immediately after it boards the machine. The rolls would be stacked in the storage conveyor until the harvester is full. Once full, the rolls would be conveyed into the Transport for hauling away. This would provide tidy bundles for ease of material handling and later processing.



Harvester and Transport Prepare to Connect

Here the Harvester and Transport approach one another to connect



Harvester and Transport are Connected

The soiled Monterey Oil Absorbent Fabric can now be automatically transferred from the Harvester into the Transport



Harvester Automatically Conveys the Fabric into Transport

This view from the Harvester Operator's seat shows the soiled Fabric moving along the storage conveyor.

The Monterey Fabric is loaded automatically into the Transport Barge, which also has a conveyORIZED storage bed

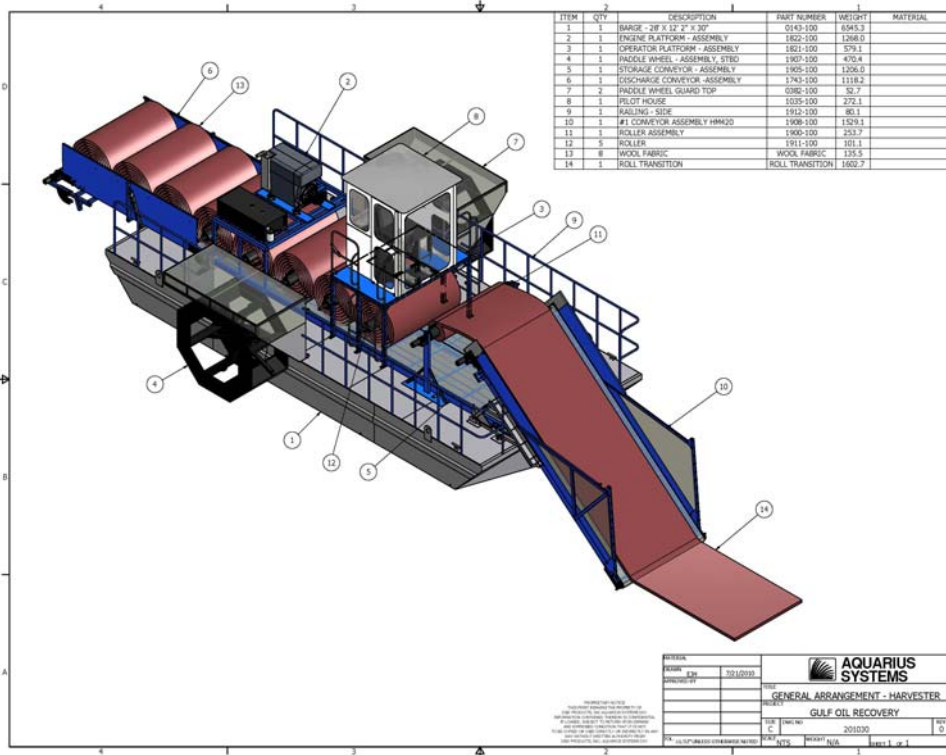


The goal of the system is to automate as much as possible for efficiency and to minimize the handling of the materials.

This proven method of harvesting and transporting vegetation, debris, or oil spill absorbent material from the water surface can be adapted to accommodate a variety of circumstances.



As the leader of this niche industry, Aquarius Systems has the expertise to develop and manufacture the equipment needed to aid in the Deep Horizon clean up.



Harvester Collects & Spools

One method of collecting the Monterey Oil Absorbent Fabric is to harvest it in the standard configuration. When the leading edge reaches the top of the conveyor, it is fed onto a spindle to form it into a manageable bundle.

Once rolled, the bundle is dropped onto the storage conveyor, a new spool is installed, and the process repeated until the machine is

Transport Transits to Shore

Once the harvester is full of soiled Fabric bundles, the Transport Barge connects to it. The bundles are conveyed into the Transport for hauling to shore for disposal or further processing.

Other vessels can serve as Transports too, including Shrimp Boats or any local boats that are capable of carrying and handling the

